

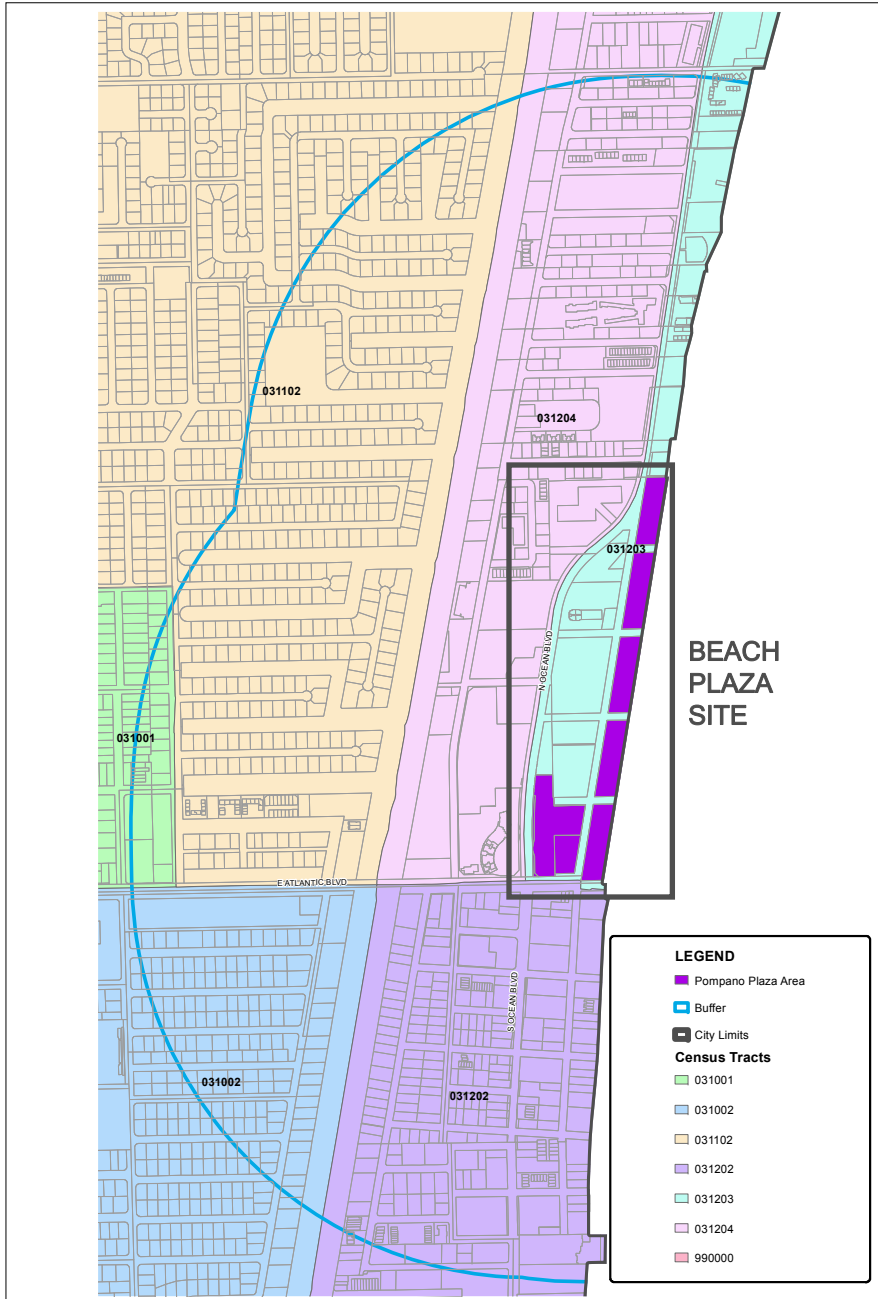


PROJECT TITLE: Pompano Beach Plaza
EXHIBIT: New & Restored Urban Plazas
LOCATION: Pompano Beach, Florida
STATUS: Under Construction
CONSTRUCTION BEGAN: 12 September 2011
EXPECTED COMPLETION: July 2012

MAKING CITIES LIVABLE - 49TH CONFERENCE, PORTLAND
SUCCESSFUL DESIGNS FOR HEALTHY INCLUSIVE COMMUNITIES

POMPANO BEACH PLAZA

CITY OF POMPANO BEACH
2010 CENSUS TRACTS



The **BEACH PLAZA** site is located in a mid to high-density, mixed-use residential and commercial neighborhood. The neighborhood is composed primarily of high-rise residential towers with ground-floor retail. The site is a popular local and tourist destination point for the city, attracting visitors from around the world.

DEMOGRAPHICS:

2010 U.S. Census data

Total population	NEIGHBORHOOD		CITY	
	Number	%	Number	%
	11,240	11%	99,845	100%

RACE	Number	%	Number	%
White (includes White Hispanics)	10,620	95%	62,515	62%
Hispanic (of any race)	883	8%	17,509	18%
Other	284	3%	7,179	7%
Black (non-Hispanic)	218	2%	28,849	29%
Asian (non-Hispanic)	118	1%	1,302	1%

AGE	Number	%	Number	%
0 to 4	215	2%	5,689	6%
5 to 17	570	5%	12,581	13%
18 to 64	6,140	55%	62,692	63%
Older than 64	4,315	38%	18,883	19%

Average income:	\$42,483	\$25,900
Poverty percent:	18%	23%

PROJECT DESCRIPTION:

The Beach Plaza project is a redevelopment project for the city's public beachfront area. The project aims to improve the experience of beachgoers through pedestrian-oriented features that incorporate public plazas, promenades, & lush landscaping.

BEACH PLAZA | POMPANO BEACH, FLORIDA
DEMOGRAPHICS



1. CREATE PUBLIC SPACES:

Open the beachfront to the public, with the opening of the Beach Plaza, exercise trails, beach promenades, and the beach itself.

2. REVITALIZE THE BEACH COMMUNITY:

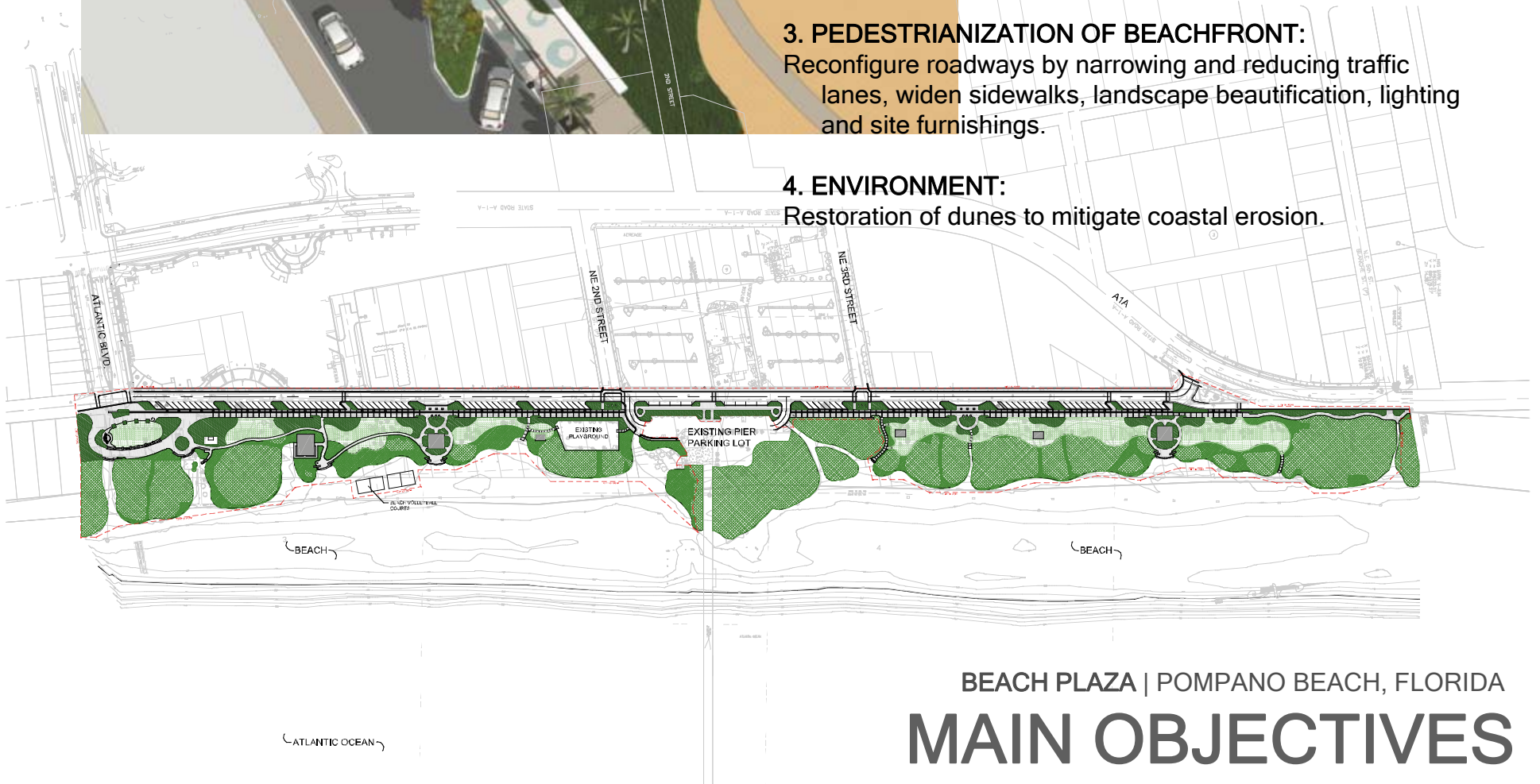
Create pedestrian-friendly corridors to dine, shop and enjoy the beach. Attract new businesses to support uses by residents and visitors.

3. PEDESTRIANIZATION OF BEACHFRONT:

Reconfigure roadways by narrowing and reducing traffic lanes, widen sidewalks, landscape beautification, lighting and site furnishings.

4. ENVIRONMENT:

Restoration of dunes to mitigate coastal erosion.



BEACH PLAZA | POMPANO BEACH, FLORIDA MAIN OBJECTIVES



GREAT LAWN:

The public spaces are designed to revitalize and create an oceanfront pedestrian promenade; both vibrant and uniquely branded for local residents and visitors.

KEY IMPROVEMENTS:

Pedestrian improvements along the east and west sides of Pompano Beach Boulevard; an exercise trail; passive park areas and playground upgrades; landscape beautification; pedestrian lighting and site furnishings; and, pedestrian plazas.

BEACH PLAZA | POMPAÑO BEACH, FLORIDA

CREATE PUBLIC SPACES



CREATING GREAT SPACES:

- Interactive fountain
- Kiosk retail
- Playground
- Exercise equipment
- Bathroom and lifeguard stand improvements
- Shade trees & structures
- Benches, tables, and other amenities.



BEACH PLAZA | POMPANO BEACH, FLORIDA

CREATE PUBLIC SPACES



KIOSKS BRING BUSINESS TO THE BEACHFRONT:

Kiosks are located throughout the Beach Plaza, which encourage people to enjoy the public spaces longer, and promote local businesses.

GOOD URBAN DESIGN ATTRACTS VISITORS:

- The Beach Plaza area is the city's prime beachfront community, with many street cafés, restaurants and shops. Numerous annual civic, educational, entertainment, and social events are held in this area.
- The pedestrian-oriented design allows cars to slow down, and encourages neighbors and visitors to walk and bike to the beach and businesses.
- The hospitable public spaces encourage all types of people to stay for longer and support local businesses.



BEACH PLAZA | POMPANO BEACH, FLORIDA

REVITALIZE BEACH COMMUNITY

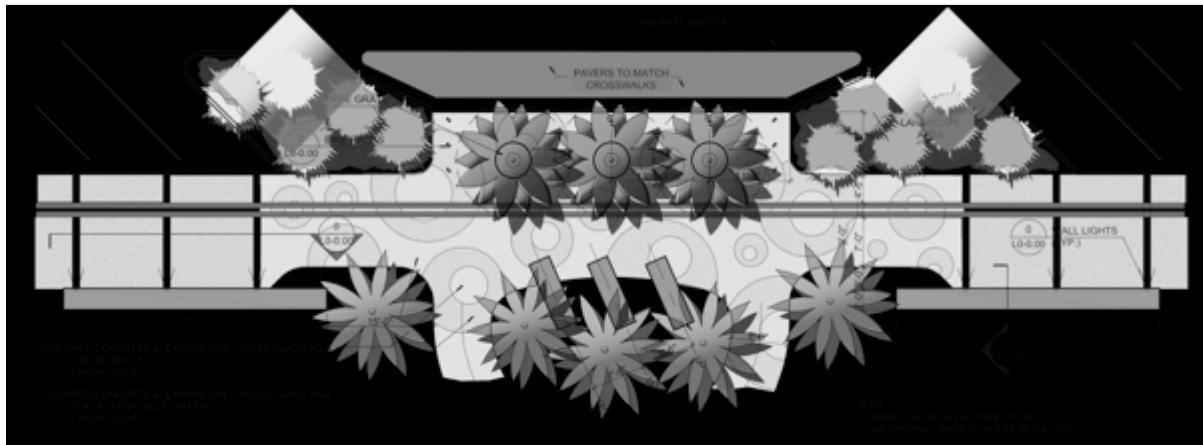


BEACH PLAZA | POMPANO BEACH, FLORIDA
PUBLIC SPACES



BETTER ROADS FOR ALL USERS:

- Traffic calming: Traffic lanes are reduced and width is narrowed. Slower cars, encourages more pedestrians and bicyclists.
- Wider sidewalks with beautiful landscaping allows for street cafés and restaurants.
- Attract new businesses to support uses by residents and visitors. Increases tax base.
- Parallel parking allows a greater turnover rate for businesses. Parked cars serve as a protective buffer between moving cars and pedestrians.
- Lighting and site furnishings create connectivity to local businesses and apartment buildings throughout the neighborhood.
- Reconfigured roadways allow for a maximized buildable footprint.



BEACH PLAZA | POMPANO BEACH, FLORIDA

PEDESTRIAN-FRIENDLY ROADS

DUNE RESTORATION PROJECT:

The restoration and stabilization of 2,800 linear feet of beach dune. The project stabilization of the existing dune with native beach vegetation. The project includes the construction of publicly accessible dune over walks, including ADA compliant access. The project will be constructed with beach compatible material from an upland sand source. The restored dune will be 3.5' high and a width at the base of 30 feet. The new dune will provide storm protection, plant and animal habitat, and shading from beachfront lighting (which helps hatchling sea turtles).



CAR CHARGING STATIONS:

Car charging stations and parking spaces are included in the project. These are Level 2 car chargers, that allow for faster charges, and promote use of electric vehicles in the city, thus reducing greenhouse gas emissions.

BIKE SHARE SYSTEM:

The Beach Plaza will incorporate bike sharing stations. The bike sharing system is a county-wide system, that will bring stations throughout the region. This allows visitors to the Beach Plaza to bike to the plaza, reducing the city's auto-dependency.



BEACH PLAZA | POMPANO BEACH, FLORIDA

ENVIRONMENT



PEDESTRIAN-FRIENDLY DESIGN:

With a large nearby population, the Beach Plaza is designed for pedestrians walking throughout the neighborhoods. The project features traffic calmed streets, bike lanes, paver-marked crosswalks, and ADA accessibility throughout (including through the beach dunes).

BEACH PLAZA | POMPANO BEACH, FLORIDA

ACCESSIBILITY